



SCHEMA TECNICA / DATA SHEET / FICHA TÉCNICA

PRODOTTO - PRODUCT - PRODUCTO: LAMA DA SEGA PER GRANITO
SAW BLADE FOR GRANITE
FLEJE PARA GRANITO

TIPO - TYPE - TIPO: UHS

SEZIONI STANDARD - STANDARD SECTIONS - SECCIONES STANDARD (H x S)

100 x 4.3 100 x 5 120 x 4.3 120 x 5 130 x 5

Tolleranza spessore / Thickness tolerance / Tolerancia de espesor **- 0.1 ÷ + 0.3 mm**

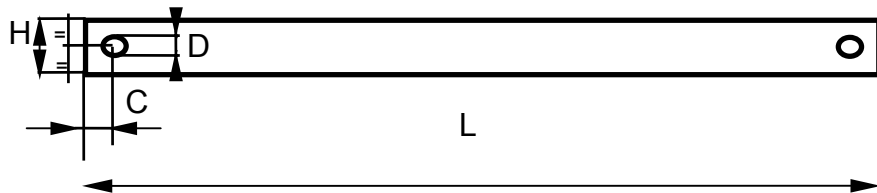
MISURE RICHIESTE - REQUESTED SIZES - MEDIDAS PEDIDAS

- L** lunghezza totale / total length / longitud total
- L - 2C** distanza tra i centri dei fori / distance between the holes centres / distancia entre centros de agujeros

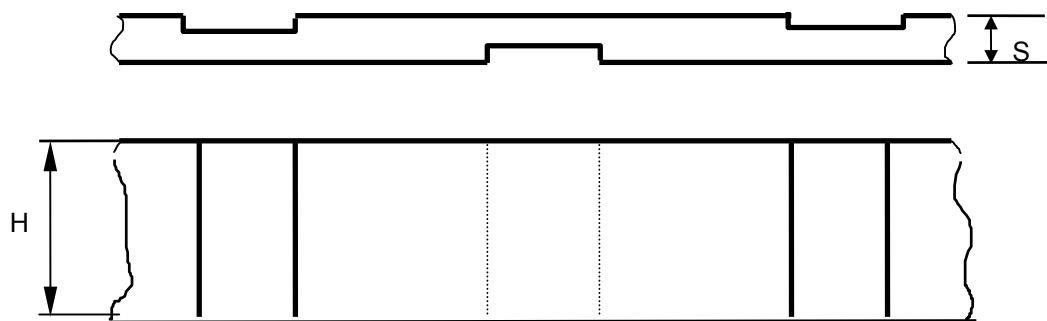
Sulla lunghezza totale la nostra tolleranza è uguale a / Over total length tolerance **±5 mm**

MISURE STANDARD - STANDARD SIZES - MEDIDAS STANDARD

- D** diametro foro / hole diameter / diametro agujero = **20 mm (-0,5mm ÷ +1mm)**
- C** distanza centro foro bordo estremità lama / distance between the hole centre and the extremity of the blade = **40 mm (± 1 mm)**



PROFILO SCANALATO / GROOVED PROFILE / PERFIL ACANALADO



ACCIAIO / STEEL / ACERO C60
durezza / hardness / dureza **MIN 260 HB MAX 360 HB**

MARMI LAME S.r.l.
Via Dorsale, 54 - 54100 - Massa